

••

Welcome to our D30 CEC Meeting

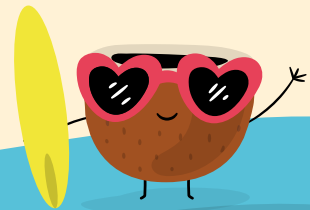
••

June 10, 2024





Superintendent's Report Community Education Council Meeting



In Support of the Chancellor's Pillar #1 Reimagining the student experience



We would like to highlight the following events

District 30 Hiring Fair



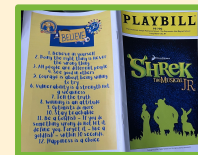
District 30 Science Expo



In Support of the Chancellor's Pillar #1 Reimagining the student experience

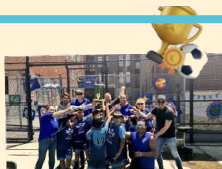


We would like to highlight the following events



District 30 Soccer Championship
- 12 teams/Schools

P.S. 70's Shrek Jr. The Musical



Congratulations to our...




2024 Appointed Principals

- **Ms. Rusmayris Guillermo, Q10**
- **Mr. Sandro Grancaric, Q84**




Reminders



Extending the 60-Day Rule for Certain Older Youth (Ages 18–20) Newcomers

- New York City has created a new policy that supports vulnerable students ages 18–20 residing in temporary adult shelters/adult family shelter for asylum seekers, by allowing them to potentially stay in their current shelter beyond 60 days if they can provide proof that they are both enrolled in and are attending a publicly funded school. Note that if an extension is sought during summer, only enrollment must be demonstrated.
- 


Food and Climate Education Resources

- In alignment with Mayor Adams' [PlaNYC](#) sustainability goals, and as announced by Chancellor Banks on [April 24](#), the DOE in partnership with the Mayor's Office on Food Policy is continuing efforts to support climate and sustainability initiatives in schools across the city. This is being done to broaden the educational experiences provided to students and expand access to food, nutrition, and climate education opportunities for all school communities.
- 
- 
- 



Reminders



Backpack Letter Encouraging Families to Complete Family Income Inquiry Form Online

- The Family Income Inquiry form is the basis for determining school's eligibility for Title I funding. The online Family Income Inquiry form for the 2024–25 school year will open on **July 2**. To encourage families to complete the online form, a letter entitled "Complete Your Family Income Inquiry Form Online" will be sent to school's ATS print queue and the Student Documents section of the NYC Student Account portal on **June 4**, for every student enrolled in a school who is not Meal Code A (i.e., does not require a form because they are enrolled in a government assistance program) or in grade 12.
- 

Health and Mental Health Services Available for Summer School

- The DOE is offering health and mental health services during summer programming at schools. These programs include:
 - a. Mental Health;
 - b. Nursing;
 - c. School Based Health Centers;
 - d. High School CATCH Program;
 - e. Dental;
 - f. Vision;
 - g. Accommodations; and
 - h. CPR/AEDs.
- 
- 

End of year District Data (EOY)

Preliminary data window closes on June 14th and makeups are due June 23rd

Benchmark level - Reading Composite Scores	BOY At or Above Benchmark	MOY At or Above Benchmark	EOY At or Above Benchmark
District	48%	49%	55%
K	48%	39%	51%
1	39%	53%	57%
2	58%	57%	57%

End of year District Data (EOY)

iReady Reading - On or Above Level	BOY	MOY	EOY
District	31%	43%	49%
3	37%	50%	57%
4	30%	38%	46%
5	31%	39%	45%
6	32%	41%	43%
7	37%	44%	49%
8	38%	44%	43%



End of year District Data (EOY)



iReady Math - On or Above Level	BOY	MOY	EOY
District	21%	35%	46%
K	11%	32%	51%
1	10%	27%	40%
2	11%	26%	41%
3	14%	29%	49%
4	22%	37%	55%
5	28%	38%	52%
6	31%	43%	49%
7	30%	40%	44%
8	30%	38%	27%

HAVE A GREAT

